

# MS405

E-4 / G-4 / L-4

The new aggressive, self-cleaning E4/L4 tread design provides high traction and durability in tough, demanding applications.

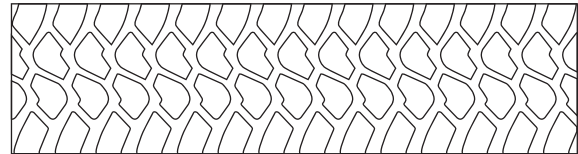
- Wear & Cut resistant tread compound
- Long life non-directional deep tread design
- Superior durability and reduced cost per hour
- Suitable for loaders and articulated dumpers
- Excellent traction & flotation
- Reduced vibration and improved stability



Applications



Footprint



Size	Load Index & Speed Symbol	Star Rating	Type	Rim	Unit	Tire Dimensions		
						Tread Depth	Section Width	Overall Diameter
23.5R25	185B / 170A8 / 201A2	**	TL	19.50/2.5	in.	66/32	23.7	65.2
					mm	52	603	1655
26.5R25	193B / 209A2	**	TL	22.00/3.0	in.	70/32	26.7	69.9
					mm	56	679	1775
29.5R25	200B / 216A2	**	TL	25.00/3.5	in.	75/32	30.0	75.1
					mm	60	763	1908