

MS401

E-4

The aggressive, self-cleaning deep E4 tread design provides excellent traction in tough, rigid dump truck applications.

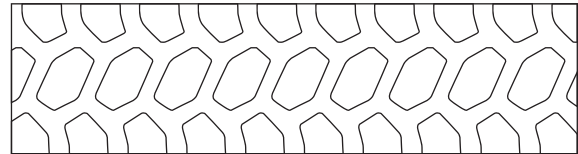
- Reduced wheel spin & excellent traction
- Excellent resistance to damage
- Longer tire life
- Off Road tread design
- Improved operator comfort
- Self-cleaning tread
- Low road noise and reduced vibration



Applications



Footprint



Size	Load Index & Speed Symbol	Star Rating	Type	Rim	Unit	Tire Dimensions		
						Tread Depth	Section Width	Overall Diameter
12.00R24	160 / 157F	***	TT / TL	8.50V	in.	40/32	12.0	49.3
					mm	32	305	1251
14.00R24	169B	***	TT	10.00W	in.	46/32	15.6	55.1
					mm	36	395	1400
14.00R25	169B	***	TT / TL	10.00/1.5	in.	46/32	15.6	55.1
					mm	36	395	1400
18.00R33	191B	**	TL	13.00/2.5	in.	66/32	20.3	73.6
					mm	52	516	1876
21.00R33	200B	**	TL	15.00/3.0	in.	77/32	21.8	78.0
					mm	61	554	1982
21.00R35	201B	**	TL	15.00/3.5	in.	74/32	23.2	80.7
					mm	59	590	2050
24.00R35	209B	**	TL	17.00/3.5	in.	83/32	26.2	85.4
					mm	66	666	2170
27.00R49	223B	**	TL	19.50/4.0	in.	88/32	28.9	106.7
					mm	70	735	2710