

# MS301

E-3 / G-3 / L-3

The aggressive, self-cleaning tread design provides excellent traction in tough, demanding applications.

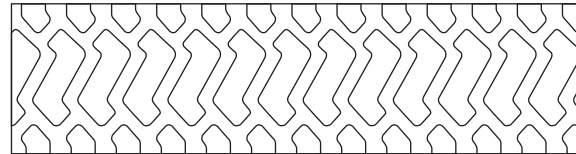
- Wear & Cut resistant tread compound
- Self-cleaning tread
- Superior traction
- Suitable for loaders and articulated dumpers
- Excellent traction & floatation
- Reduced vibration & improved stability



Applications



Footprint



Size	Load Index & Speed Symbol	Star Rating	Type	Rim	Unit	Tire Dimensions		
						Tread Depth	Section Width	Overall Diameter
17.5R25	67B / 153A8 / 182A2	**	TL	14.00/1.5	in.	35/32	17.7	52.7
					mm	28	449	1339
20.5R25	177B / 161A8 / 193A2	**	TL	17.00/2.0	in.	37/32	20.4	59.0
					mm	30	517	1499
23.5R25	185B / 170A8 / 201A2	**	TL	19.50/2.5	in.	41/32	23.9	63.4
					mm	33	608	1611
26.5R25	193B / 209A2	**	TL	22.00/3.0	in.	45/32	26.7	68.8
					mm	36	679	1748
29.5R25	200B / 216A2	**	TL	25.00/3.5	in.	49/32	30.0	74.3
					mm	39	763	1886